

Rape seed

Pesticide application

Further recommendations



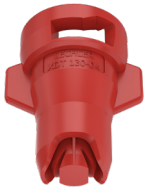
IDTA 4.0–8.0 bar
IDKT 1.5–3.0 bar

ID 4.0–8.0 bar
IDK/IDKN 1.5–3.0 bar

Dropleg^{UL}
TwinSprayCap
FT 1.0–3.0 bar

Fungicide/Insecticide

Fungicide/Insecticide



IDTA 4.0–8.0 bar
IDKT 1.5–3.0 bar
XDT 3.0–8.0 bar

Herbicide

Pre-emergence
herbicide



PRE 1.5–8.0 bar
XDT 3.0–8.0 bar

00

10

11

14

18

33

51

57–59

61

66–67

69

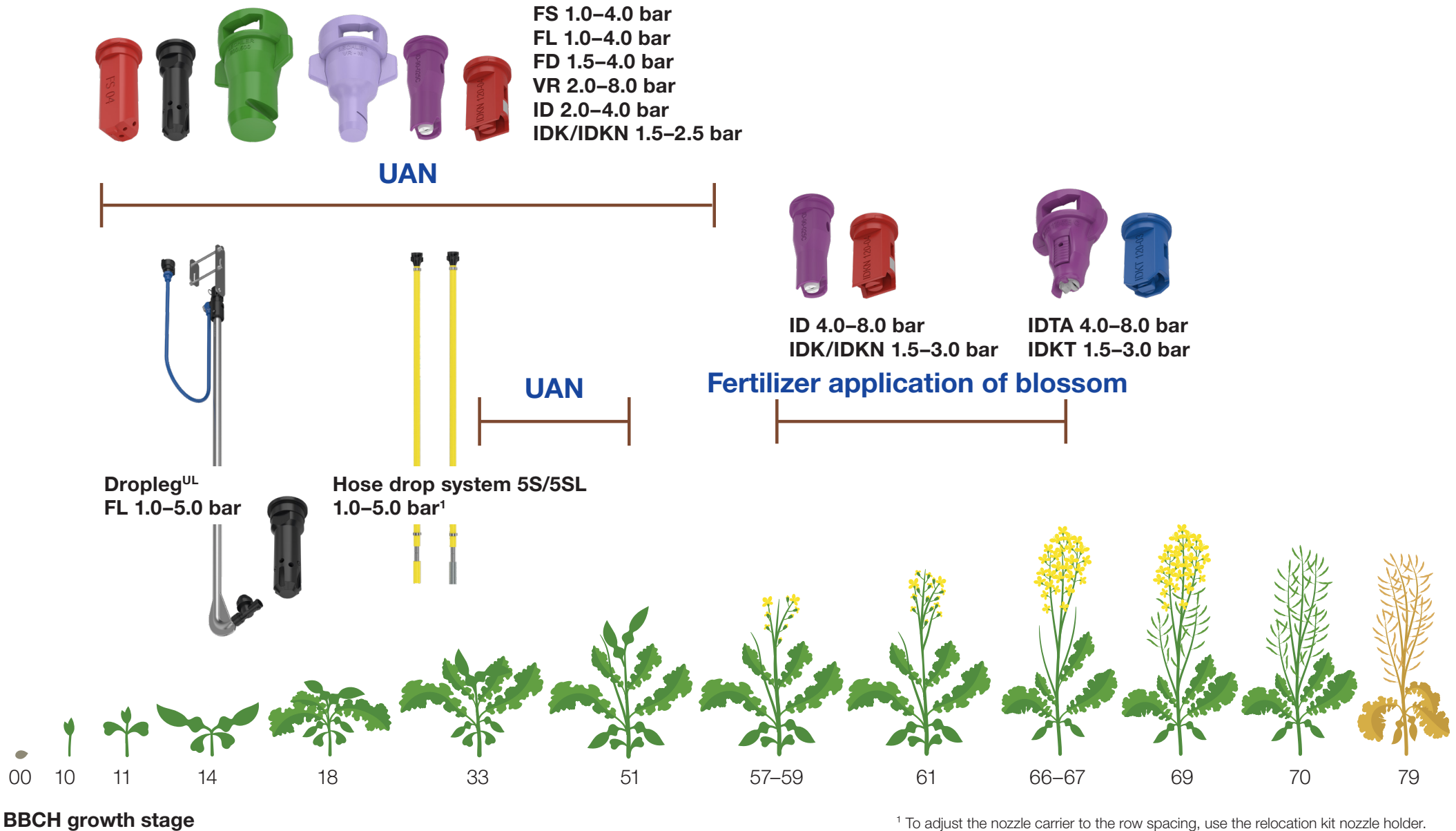
70

79

BBCH growth stage

UAN application

Further recommendations



¹ To adjust the nozzle carrier to the row spacing, use the relocation kit nozzle holder.