



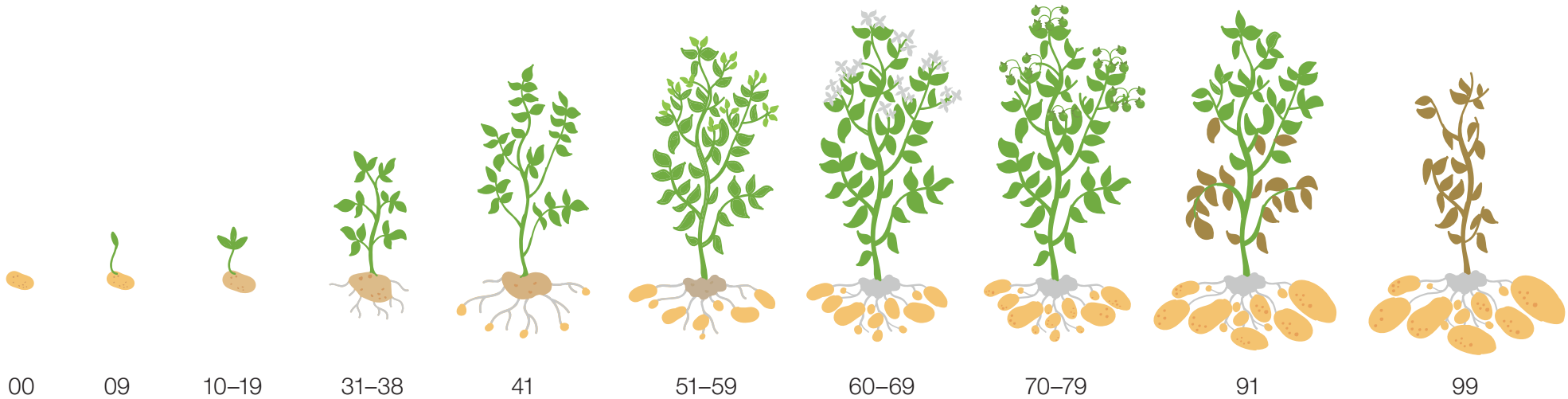
Herbizid

IDTA 4,0–8,0 bar
IDKT 1,5–3,0 bar
XDT 3,0–8,0 bar

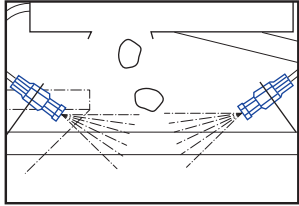


Krautabtötung

IDTA 4,0–8,0 bar
IDKT 1,5–3,0 bar



BBCH Entwicklungsstadium



Flüssigbeizung
Knollenabgabe



TR 1,5–3,0 bar

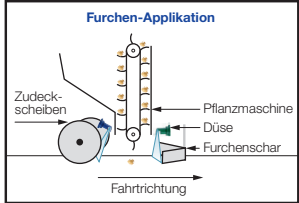


IDTA 4,0–8,0 bar
IDKT 1,5–3,0 bar
XDT 3,0–8,0 bar



ID 4,0–8,0 bar
IDK/IDKN 1,5–3,0 bar

Fungizid/Insektizid



Furchenbehandlung



FT 1,0–2,5 bar

00

09

10–19

31–38

41

51–59

60–69

70–79

91

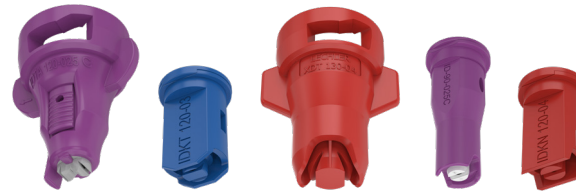
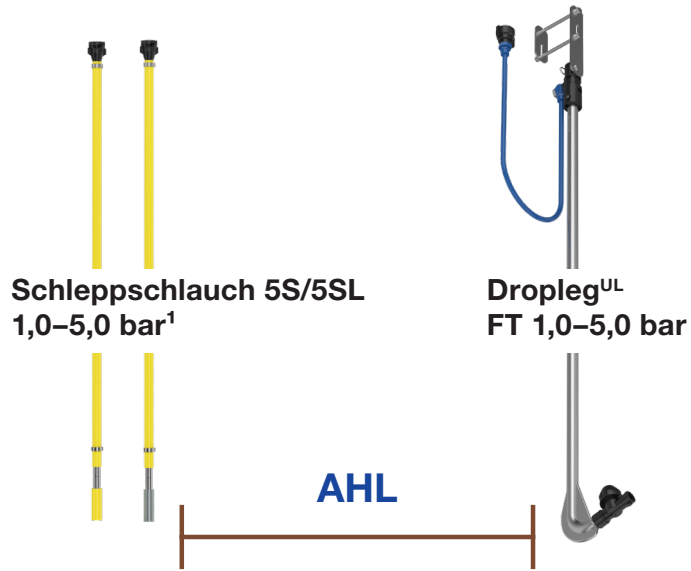
99

BBCH Entwicklungsstadium

AHL-Anwendungen



Weitere
Empfehlungen



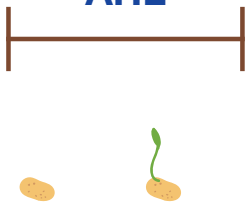
IDTA 4,0–8,0 bar
IDKT 1,5–3,0 bar
XDT 3,0–8,0 bar
ID 4,0–8,0 bar
IDK/IDKN 1,5–3,0 bar

Fungizid + Teilmenge AHL²



FS 1,0–4,0 bar
FD 1,5–4,0 bar
VR 2,0–8,0 bar

AHL



00

09

10–19



31–38



41



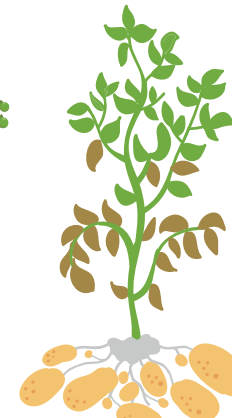
51–59



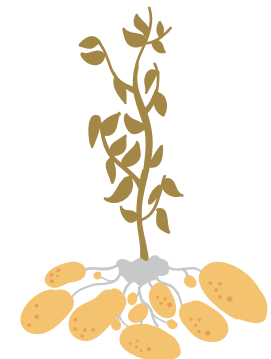
60–69



70–79



91



99

BBCH Entwicklungsstadium

¹ Zur Anpassung der Düsenträger an den Reihenabstand, Verlagerungssatz verwenden.

² Max. 30 l/ha AHL zur Phytophthoraekämpfung.