

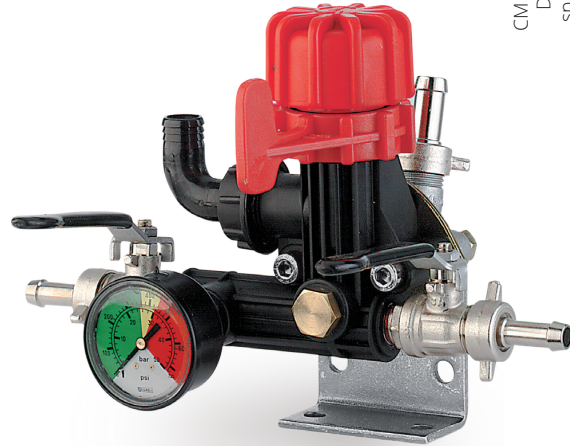
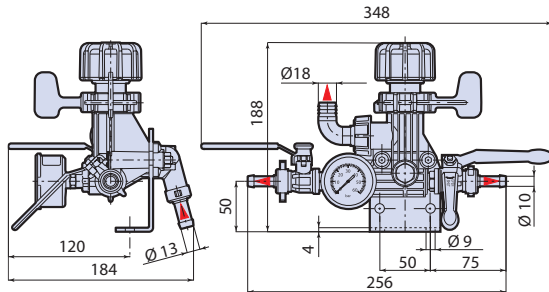


GR 30

MEDIA PRESSIONE
medium pressure

Portata max	40	L/1'	Max. flow	10,6	gpm
Pressione max	25	bar	Max. pressure	360	psi
Temperatura max	60	°C	Max. temperature	140	°F
Peso	1,2	kg	Weight	2,6	lb

CM1888640
DI1808567
sp_gr30.pdf
MI199406



Cod. 879 + 892



AR 252

Gruppo comando con valvola di regolazione pressione lavoro, leva comando by-pass, completo di manometro a bagno di glicerina con quadrante colorato.

Control unit with working pressure regulating valve, by-pass control lever and glycerine bath pressure gauge with coloured dial.

Tipo pompa
Pump type

Gruppo comando
Control unit

Kit per comando incorporato
Kit for built-in control unit

Kit per comando separato
Kit for remote control unit

codice · code

AR 252

879
1 rubinetto
1 valve

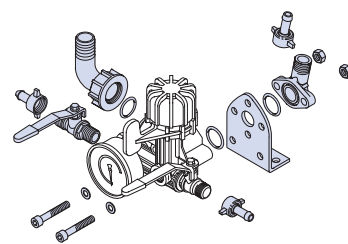
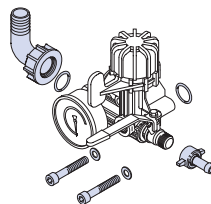
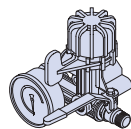
891

892
+1 rubinetto / valve
Senza autobloccanti / Without self-locking nuts

NB:

I disegni evidenziano in azzurro i particolari forniti nel kit corrispondente, le parti in bianco servono come riferimento di impiego.

The parts marked in blue on the drawings are supplied in the corresponding kit, while the parts in white serve as a reference for use.



879

891

892